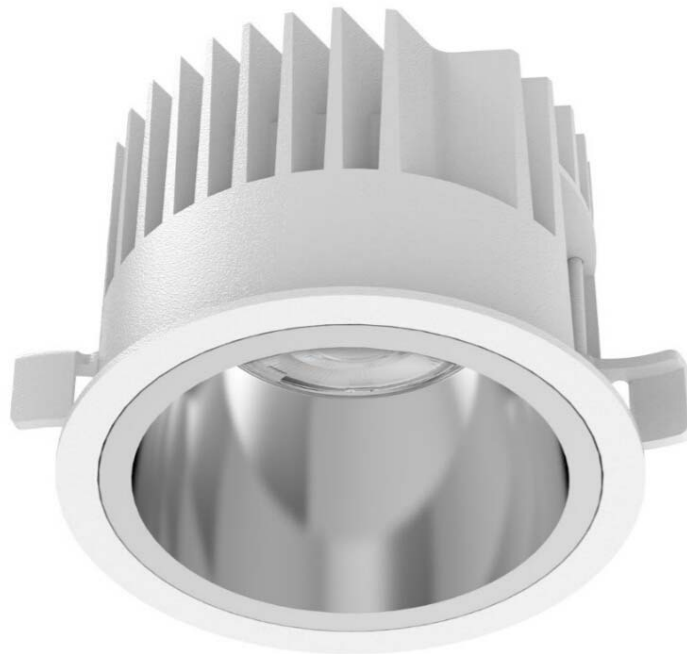


GONIOPHOTOMETERS SYSTEM TEST REPORT

LED Downlight TAKEO Series LE- T100-9W-840-30



Light Output Ratio:	100.0%	
Luminaire Power:	8.892 W	
SHR Nominal:	0.00	Calculated using the TM5
SHR Maximum:	1.00	fine grid method.

C Range: 0 - 360DEG
C Interval: 15.0DEG
Test Speed: HIGH
Temperature: 25.3DEG
Operators: Meng Yongjian
Test Date: 2018-01-19

γ Range: 0 - 90DEG
 γ Interval: 1.0DEG
Test System: EVERFINE GO-2000B_V1 SYSTEM V2.0.288
Humidity: 52%
Test Distance: 5.850m [K=1.0000]
Remarks:

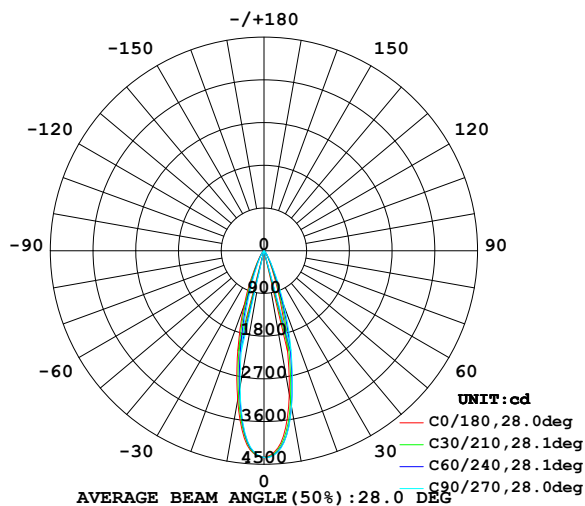
GONIOPHOTOMETERS SYSTEM TEST REPORT

LUMINAIRE PHOTOMETRIC TEST REPORT

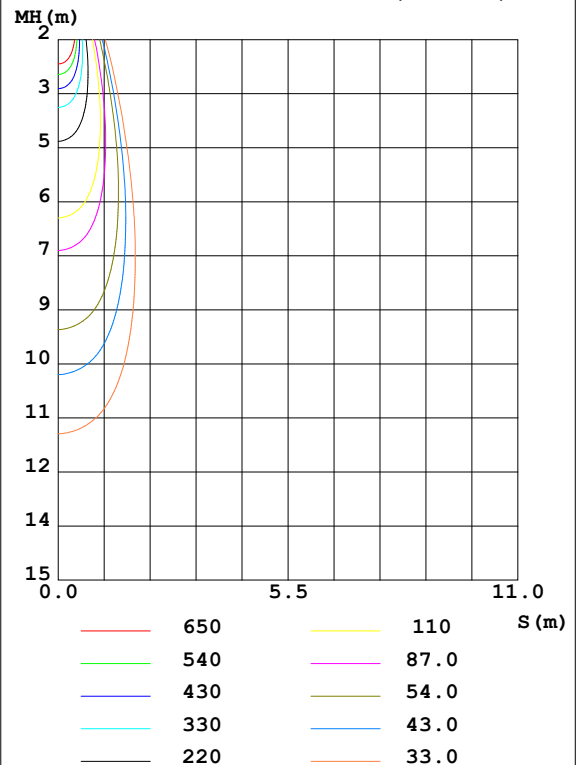
Test:U:34.20V I:0.2600A P:8.892W PF:1.000 Lamp Flux:1238.79x1 lm		
NAME: T100-9W-840-30	TYPE:Downlight	SERIAL No.:
SPEC.:4000K	DIM.: ϕ 110mm*H79mm	

DATA OF LAMP		PHOTOMETRIC DATA Eff: 139.32 lm/W			
MODEL	CITIZEN-4000K	I _{max} (cd)	4356	S/MH (C0/180)	0.49
NOMINAL POWER (W)	9	LOR (%)	100.0	S/MH (C90/270)	0.43
RATED VOLTAGE (V)	36	TOTAL FLUX (lm)	1238.8	η UP, DN (C0-180)	0.0, 53.3
NOMINAL FLUX (lm)	1238.79	CIE CLASS	DIRECT	η UP, DN (C180-360)	0.0, 46.7
LAMPS INSIDE	1	η up (%)	0.0	CIBSE SHR NOM	0.00
TEST VOLTAGE (V)	34.2	η down (%)	100.0	CIBSE SHR MAX	1.00

LUMINOUS INTENSITY DISTRIBUTION DIAGRAM



C0 PLANE ISOLUX DIAGRAM (UNIT:lx)



C Range: 0 - 360DEG
C Interval: 15.0DEG
Test Speed: HIGH
Temperature: 25.3DEG
Operators: Meng Yongjian
Test Date: 2018-01-19

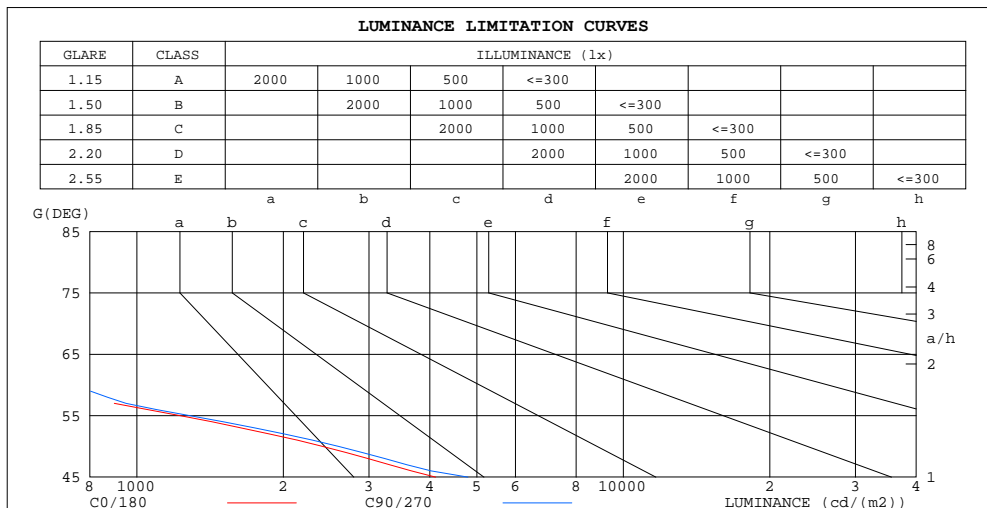
γ Range: 0 - 90DEG
 γ Interval: 1.0DEG
Test System: EVERFINE GO-2000B_V1 SYSTEM V2.0.288
Humidity: 52%
Test Distance: 5.850m [K=1.0000]
Remarks:

GONIOPHOTOMETERS SYSTEM TEST REPORT

ZONAL FLUX DIAGRAM AND LUMINANCE LIMITATION CURVES

ZONAL FLUX DIAGRAM:

γ	C0	C45	C90	C135	C180	C225	C270	C315	γ	Φ zone	Φ total	Φ lum, lamp
10	3067	3311	3340	3218	3200	3004	2902	2991	0- 10	359.3	359.3	29,29
20	794.9	1046	1247	1259	1231	986.4	793.9	758.9	10- 20	529.4	888.7	71.7,71.7
30	178.9	223.3	271.0	295.4	284.5	224.8	187.4	175.3	20- 30	234.5	1123	90.7,90.7
40	59.42	65.52	75.07	83.15	84.29	67.17	57.36	58.16	30- 40	79.47	1203	97.1,97.1
50	14.70	16.05	15.86	15.66	16.67	16.48	15.11	14.73	40- 50	26.48	1229	99.2,99.2
60	3.084	3.611	3.490	2.892	3.143	3.681	3.440	3.059	50- 60	7.010	1236	99.8,99.8
70	1.038	1.153	1.051	0.8998	1.066	1.234	1.096	0.9893	60- 70	1.982	1238	99.9,99.9
80	0.2608	0.2182	0.1755	0.1615	0.2575	0.2716	0.1940	0.2147	70- 80	0.6031	1239	100,100
90	0.0437	0.0394	0.0394	0.0372	0.0262	0.0328	0.0328	0.0328	80- 90	0.0917	1239	100,100
100									90-100			
110									100-110			
120									110-120			
130									120-130			
140									130-140			
150									140-150			
160									150-160			
170									160-170			
180									170-180			
DEG	LUMINOUS INTENSITY:cd									UNIT:lm		



C Range: 0 - 360DEG
 C Interval: 15.0DEG
 Test Speed: HIGH
 Temperature: 25.3DEG
 Operators: Meng Yongjian
 Test Date: 2018-01-19

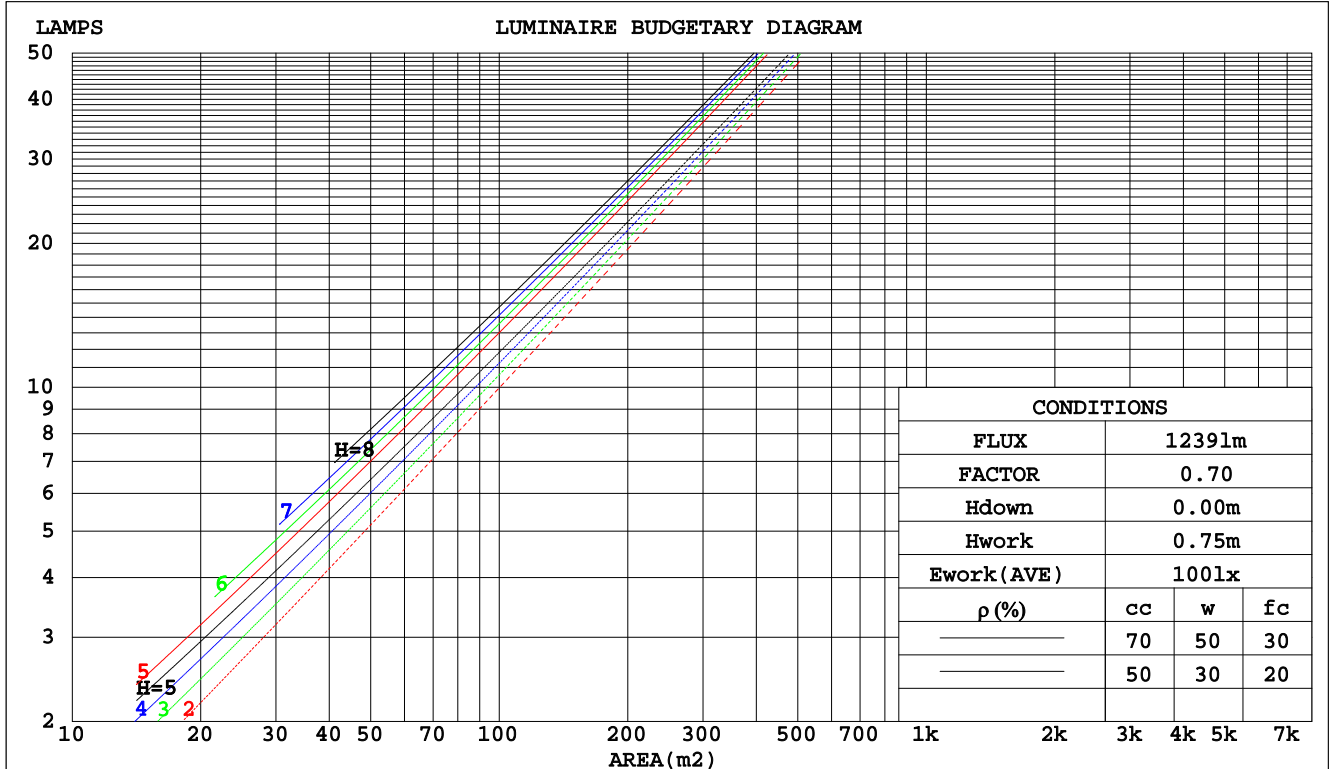
γ Range: 0 - 90DEG
 γ Interval: 1.0DEG
 Test System: EVERFINE GO-2000B_V1 SYSTEM V2.0.288
 Humidity: 52%
 Test Distance: 5.850m [K=1.0000]
 Remarks:

GONIOPHOTOMETERS SYSTEM TEST REPORT

CU AND LUMINAIRE BUDGETARY ESTIMATE DIAGRAM

Test:U:34.20V I:0.2600A P:8.892W PF:1.000 Lamp Flux:1238.79x1 lm		
NAME: T100-9W-840-30	TYPE:Downlight	SERIAL No.:
SPEC.:4000K	DIM.: ϕ 110mm*H79mm	

ρ_{cc}	80%			70%			50%			30%			10%			0
ρ_w	50%	30%	10%	50%	30%	10%	50%	30%	10%	50%	30%	10%	50%	30%	10%	0
ρ_{fc}	20%			20%			20%			20%			20%			0
RCR	RCR:Room Cavity Ratio						Coefficients of Utilization(CU)									
0.0	1.19	1.19	1.19	1.16	1.16	1.16	1.11	1.11	1.11	1.06	1.06	1.06	1.02	1.02	1.02	1.00
1.0	1.12	1.10	1.09	1.10	1.09	1.07	1.06	1.05	1.04	1.03	1.02	1.01	.99	.98	.98	.96
2.0	1.07	1.03	1.01	1.05	1.02	.00	1.02	.00	.97	.99	.97	.95	.96	.95	.93	.92
3.0	1.02	.98	.95	1.00	.97	.94	.98	.95	.92	.95	.93	.91	.93	.91	.90	.88
4.0	.97	.93	.89	.96	.92	.89	.94	.91	.88	.92	.89	.87	.90	.88	.86	.85
5.0	.93	.88	.85	.92	.88	.85	.90	.87	.84	.89	.86	.83	.87	.85	.83	.82
6.0	.89	.85	.81	.89	.84	.81	.87	.83	.81	.86	.83	.80	.85	.82	.80	.79
7.0	.86	.81	.78	.85	.81	.78	.84	.80	.78	.83	.80	.77	.82	.79	.77	.76
8.0	.83	.78	.75	.82	.78	.75	.81	.78	.75	.80	.77	.75	.80	.77	.74	.73
9.0	.80	.76	.73	.80	.75	.72	.79	.75	.72	.78	.75	.72	.77	.74	.72	.71
10.0	.77	.73	.70	.77	.73	.70	.76	.73	.70	.76	.72	.70	.75	.72	.70	.69



C Range: 0 - 360DEG
 C Interval: 15.0DEG
 Test Speed: HIGH
 Temperature:25.3DEG
 Operators:Meng Yongjian
 Test Date:2018-01-19

γ Range: 0 - 90DEG
 γ Interval: 1.0DEG
 Test System:EVERFINE GO-2000B_V1 SYSTEM V2.0.288
 Humidity:52%
 Test Distance:5.850m [K=1.0000]
 Remarks:

GONIOPHOTOMETERS SYSTEM TEST REPORT

WEC AND CCEC

Test:U:34.20V I:0.2600A P:8.892W PF:1.000 Lamp Flux:1238.79x1 lm											
NAME: T100-9W-840-30						TYPE:Downlight			SERIAL No.:		
SPEC.:4000K						DIM.: φ110mm*H79mm					

ρcc	80%			70%			50%			30%			10%			0
ρw	50%	30%	10%	50%	30%	10%	50%	30%	10%	50%	30%	10%	50%	30%	10%	0
ρfc	20%			20%			20%			20%			20%			0
RCR	RCR:Room Cavity Ratio						Wall Exitance Coefficients(WEC)									
0.0																
1.0	.146	.083	.026	.139	.079	.025	.127	.073	.023	.115	.066	.021	.105	.061	.020	
2.0	.136	.075	.023	.131	.072	.022	.120	.067	.021	.111	.062	.019	.102	.058	.018	
3.0	.128	.068	.020	.123	.066	.020	.115	.062	.019	.107	.058	.018	.099	.055	.017	
4.0	.120	.063	.018	.116	.061	.018	.109	.058	.017	.102	.055	.017	.096	.052	.016	
5.0	.114	.058	.017	.110	.057	.017	.104	.054	.016	.098	.052	.015	.093	.050	.015	
6.0	.108	.054	.015	.105	.053	.015	.100	.051	.015	.095	.049	.014	.090	.047	.014	
7.0	.103	.051	.014	.100	.050	.014	.096	.048	.014	.091	.047	.014	.087	.045	.013	
8.0	.098	.048	.013	.096	.047	.013	.092	.046	.013	.088	.044	.013	.084	.043	.013	
9.0	.094	.045	.013	.092	.045	.013	.088	.044	.012	.085	.042	.012	.081	.041	.012	
10.0	.090	.043	.012	.088	.043	.012	.085	.042	.012	.082	.041	.012	.079	.040	.011	

ρcc	80%			70%			50%			30%			10%			0
ρw	50%	30%	10%	50%	30%	10%	50%	30%	10%	50%	30%	10%	50%	30%	10%	0
ρfc	20%			20%			20%			20%			20%			0
RCR	RCR:Room Cavity Ratio						Ceiling Cavity Exitance Coefficients(CCEC)									
0.0	.190	.190	.190	.163	.163	.163	.111	.111	.111	.064	.064	.064	.020	.020	.020	
1.0	.169	.158	.147	.145	.135	.127	.099	.093	.088	.057	.054	.051	.018	.017	.016	
2.0	.151	.133	.117	.130	.114	.101	.089	.079	.070	.051	.046	.041	.016	.015	.013	
3.0	.137	.113	.094	.118	.098	.082	.081	.068	.057	.047	.040	.034	.015	.013	.011	
4.0	.125	.098	.078	.107	.085	.067	.074	.059	.047	.043	.035	.028	.014	.011	.009	
5.0	.115	.086	.065	.099	.074	.056	.068	.052	.040	.039	.031	.024	.013	.010	.008	
6.0	.106	.076	.054	.092	.066	.047	.063	.046	.033	.037	.027	.020	.012	.009	.007	
7.0	.099	.068	.046	.085	.059	.040	.059	.041	.029	.034	.024	.017	.011	.008	.006	
8.0	.093	.061	.040	.080	.053	.035	.055	.037	.025	.032	.022	.015	.010	.007	.005	
9.0	.087	.056	.035	.075	.049	.030	.052	.034	.021	.030	.020	.013	.010	.007	.004	
10.0	.083	.051	.030	.071	.044	.027	.049	.031	.019	.029	.019	.011	.009	.006	.004	

C Range: 0 - 360DEG
 C Interval: 15.0DEG
 Test Speed: HIGH
 Temperature:25.3DEG
 Operators:Meng Yongjian
 Test Date:2018-01-19

γ Range: 0 - 90DEG
 γ Interval: 1.0DEG
 Test System:EVERFINE GO-2000B_V1 SYSTEM V2.0.288
 Humidity:52%
 Test Distance:5.850m [K=1.0000]
 Remarks:

GONIOPHOTOMETERS SYSTEM TEST REPORT

UGR(Unified Glare Rating) Table

Test:U:34.20V I:0.2600A P:8.892W PF:1.000 Lamp Flux:1238.79x1 lm		
NAME: T100-9W-840-30	TYPE:Downlight	SERIAL No.:
SPEC.:4000K	DIM.: $\phi 110\text{mm} \times H79\text{mm}$	

ceiling/cavity	0.7	0.7	0.5	0.5	0.3	0.7	0.7	0.5	0.5	0.3
walls	0.5	0.3	0.5	0.3	0.3	0.5	0.3	0.5	0.3	0.3
working plane	0.2	0.2	0.2	0.2	0.2	0.2	0.2	0.2	0.2	0.2
Room dimensions	Viewed crosswise					Viewed endwise				
x = 2H y = 2H	8.9	9.6	9.1	9.8	9.9	10.0	10.7	10.2	10.9	11.0
3H	8.8	9.4	9.0	9.6	9.8	9.9	10.5	10.1	10.7	10.9
4H	8.7	9.3	9.0	9.5	9.8	9.8	10.4	10.1	10.6	10.9
6H	8.6	9.2	8.9	9.5	9.7	9.7	10.3	10.0	10.5	10.8
8H	8.6	9.2	8.9	9.4	9.7	9.7	10.3	10.0	10.5	10.8
12H	8.5	9.1	8.8	9.3	9.6	9.6	10.2	9.9	10.4	10.7
4H 2H	8.7	9.3	9.0	9.6	9.8	9.8	10.4	10.1	10.6	10.9
3H	8.6	9.1	8.9	9.4	9.7	9.7	10.2	10.0	10.5	10.7
4H	8.5	9.0	8.8	9.3	9.6	9.6	10.1	9.9	10.4	10.7
6H	8.4	8.8	8.8	9.2	9.5	9.5	9.9	9.9	10.3	10.6
8H	8.4	8.8	8.7	9.1	9.5	9.4	9.8	9.8	10.2	10.6
12H	8.3	8.7	8.7	9.0	9.4	9.4	9.8	9.8	10.1	10.5
8H 4H	8.4	8.8	8.7	9.1	9.5	9.4	9.8	9.8	10.2	10.6
6H	8.2	8.6	8.7	9.0	9.4	9.3	9.7	9.7	10.1	10.5
8H	8.2	8.5	8.6	8.9	9.3	9.3	9.6	9.7	10.0	10.4
12H	8.1	8.4	8.6	8.8	9.3	9.2	9.5	9.7	9.9	10.4
12H 4H	8.3	8.7	8.7	9.0	9.4	9.4	9.8	9.8	10.1	10.5
6H	8.2	8.5	8.6	8.9	9.3	9.3	9.6	9.7	10.0	10.4
8H	8.1	8.4	8.6	8.8	9.3	9.2	9.5	9.7	9.9	10.4
Variations with the observer position at spacings:										
S = 1.0H	+ 2.5 / - 8.6					+ 3.2 / - 9.4				
1.5H	+ 4.2 / - 6.3					+ 5.1 / - 7.0				
2.0H	+ 5.0 / - 6.1					+ 5.5 / - 5.9				

CIE Pub.117 Corrected 1239 lm Total Lamp Luminous Flux.(8log(F/F0) = 0.7)

C Range: 0 - 360DEG
C Interval: 15.0DEG
Test Speed: HIGH
Temperature:25.3DEG
Operators:Meng Yongjian
Test Date:2018-01-19

γ Range: 0 - 90DEG
 γ Interval: 1.0DEG
Test System:EVERFINE GO-2000B_V1 SYSTEM V2.0.288
Humidity:52%
Test Distance:5.850m [K=1.0000]
Remarks:

GONIOPHOTOMETERS SYSTEM TEST REPORT

UTILIZATION FACTORS TABLE

Test:U:34.20V I:0.2600A P:8.892W PF:1.000 Lamp Flux:1238.79x1 lm		
NAME: T100-9W-840-30	TYPE:Downlight	SERIAL No.:
SPEC.:4000K	DIM.: $\phi 110\text{mm} \times H79\text{mm}$	

REFLECTANCE										
Ceiling	0.8	0.8	0.8	0.7	0.7	0.7	0.5	0.5	0.5	0
Walls	0.7	0.5	0.3	0.7	0.5	0.3	0.7	0.5	0.3	0
Working plane	0.2	0.2	0.2	0.2	0.2	0.2	0.2	0.2	0.2	0
ROOM INDEX	UTILIZATION FACTORS(PERCENT) $k(RI) \times RCR = 5$									
$k = 0.60$	90	84	80	89	84	80	88	83	80	77
0.80	97	91	88	96	91	88	95	91	87	84
1.00	101	96	92	100	95	92	99	95	92	88
1.25	105	100	97	104	99	96	102	98	95	91
1.50	107	103	100	106	102	99	104	101	98	94
2.00	109	106	103	108	105	102	105	103	100	95
2.50	111	107	105	109	106	104	106	104	102	96
3.00	112	109	107	111	108	106	107	105	103	97
4.00	114	112	110	112	110	108	109	107	106	99
5.00	115	113	112	113	112	110	109	108	107	100
ROOM INDEX	UF(total)									Direct
According to DIN EN 13032-2 2004			Suspended					SHRNOM = 1.25		

C Range: 0 - 360DEG
 C Interval: 15.0DEG
 Test Speed: HIGH
 Temperature:25.3DEG
 Operators:Meng Yongjian
 Test Date:2018-01-19

γ Range: 0 - 90DEG
 γ Interval: 1.0DEG
 Test System:EVERFINE GO-2000B_V1 SYSTEM V2.0.288
 Humidity:52%
 Test Distance:5.850m [K=1.0000]
 Remarks:

GONIOPHOTOMETERS SYSTEM TEST REPORT

ISOCANDELA DIAGRAM

Test:U:34.20V I:0.2600A P:8.892W PF:1.000 Lamp Flux:1238.79x1 lm		
NAME: T100-9W-840-30	TYPE:Downlight	SERIAL No.:
SPEC.:4000K	DIM.: ϕ 110mm*H79mm	

Conical surface Flux(90deg):

1220.3 lm

%lum = 98.5%

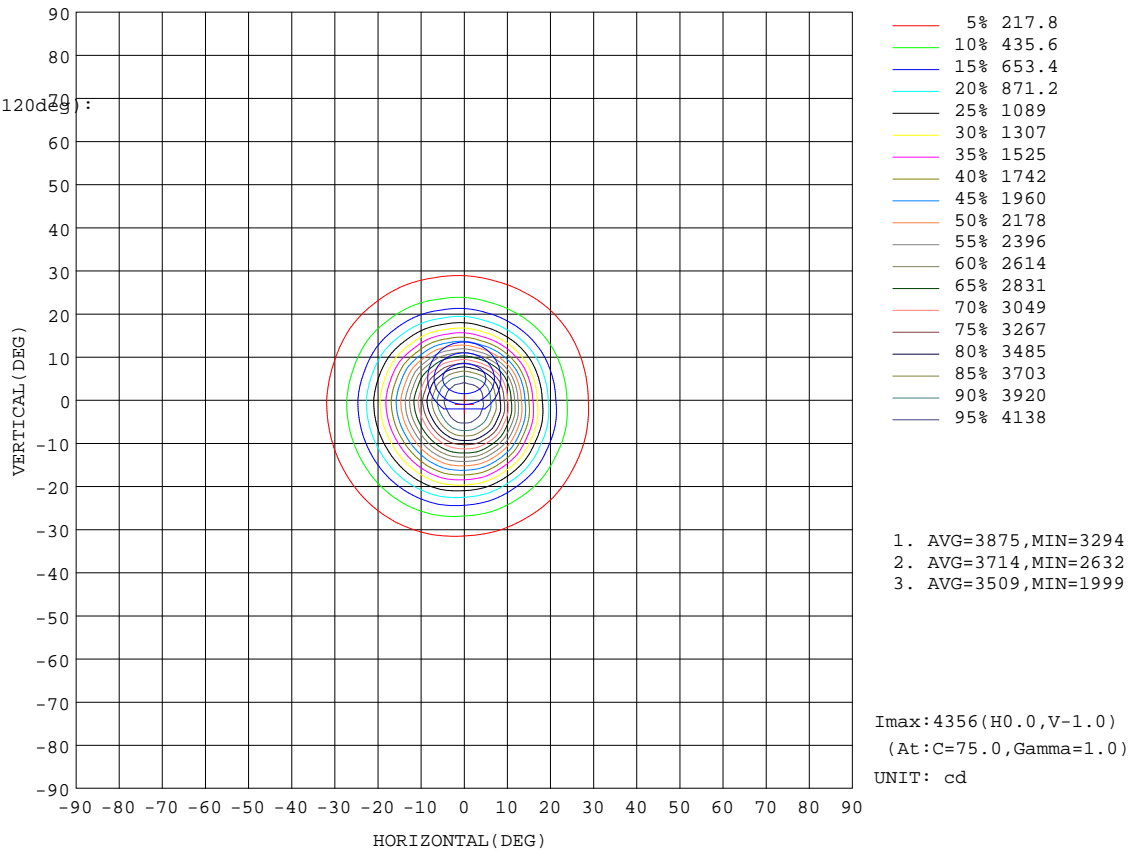
%lamp = 98.5%

Conical surface Flux(120deg):

1236.1 lm

%lum = 99.8%

%lamp = 99.8%



C Range: 0 - 360DEG
C Interval: 15.0DEG
Test Speed: HIGH
Temperature:25.3DEG
Operators:Meng Yongjian
Test Date:2018-01-19

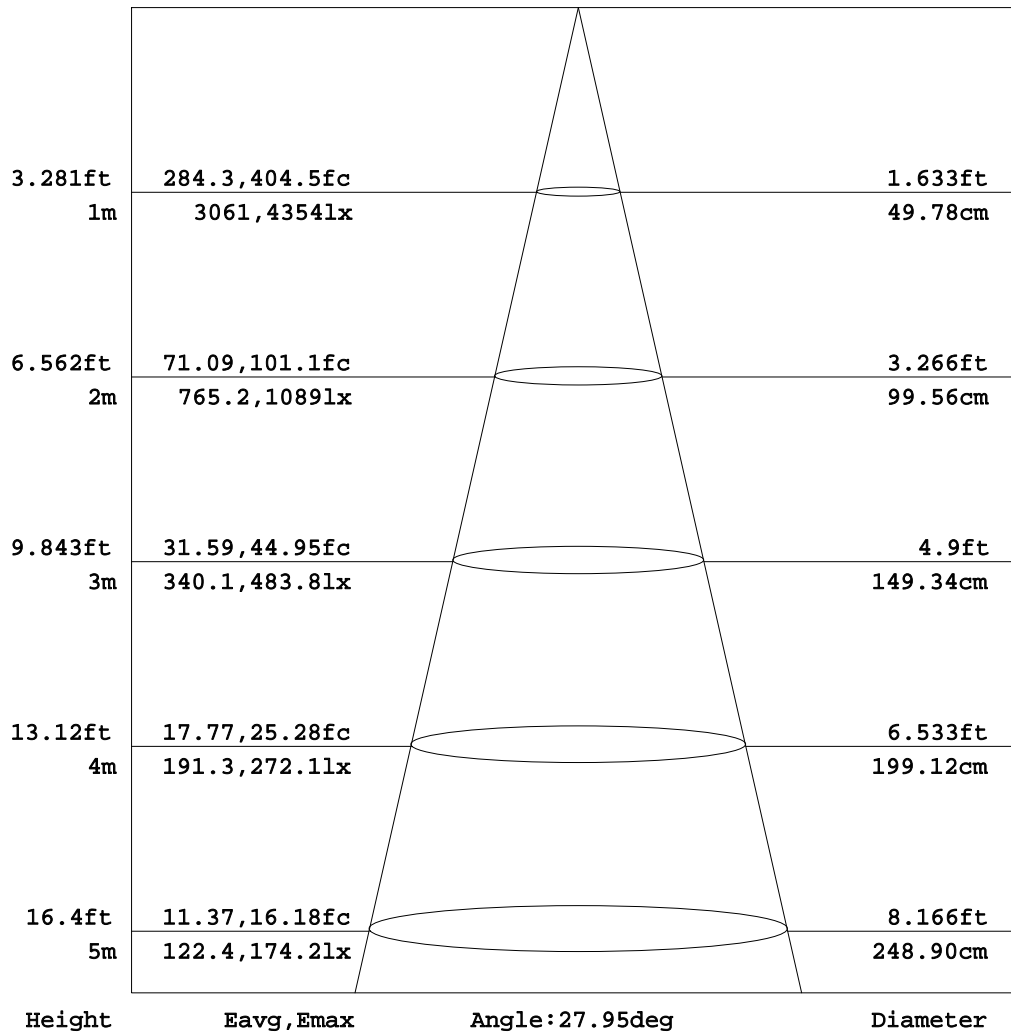
γ Range: 0 - 90DEG
 γ Interval: 1.0DEG
Test System:EVERFINE GO-2000B_V1 SYSTEM V2.0.288
Humidity:52%
Test Distance:5.850m [K=1.0000]
Remarks:

GONIOPHOTOMETERS SYSTEM TEST REPORT

AAI Figure

Test:U:34.20V I:0.2600A P:8.892W PF:1.000 Lamp Flux:1238.79x1 lm		
NAME: T100-9W-840-30	TYPE:Downlight	SERIAL No.:
SPEC.:4000K	DIM.: ϕ 110mm*H79mm	

Flux out:597.7 lm



Note: The Curves indicate the illuminated area and the average illumination when the luminaire is at different distance.

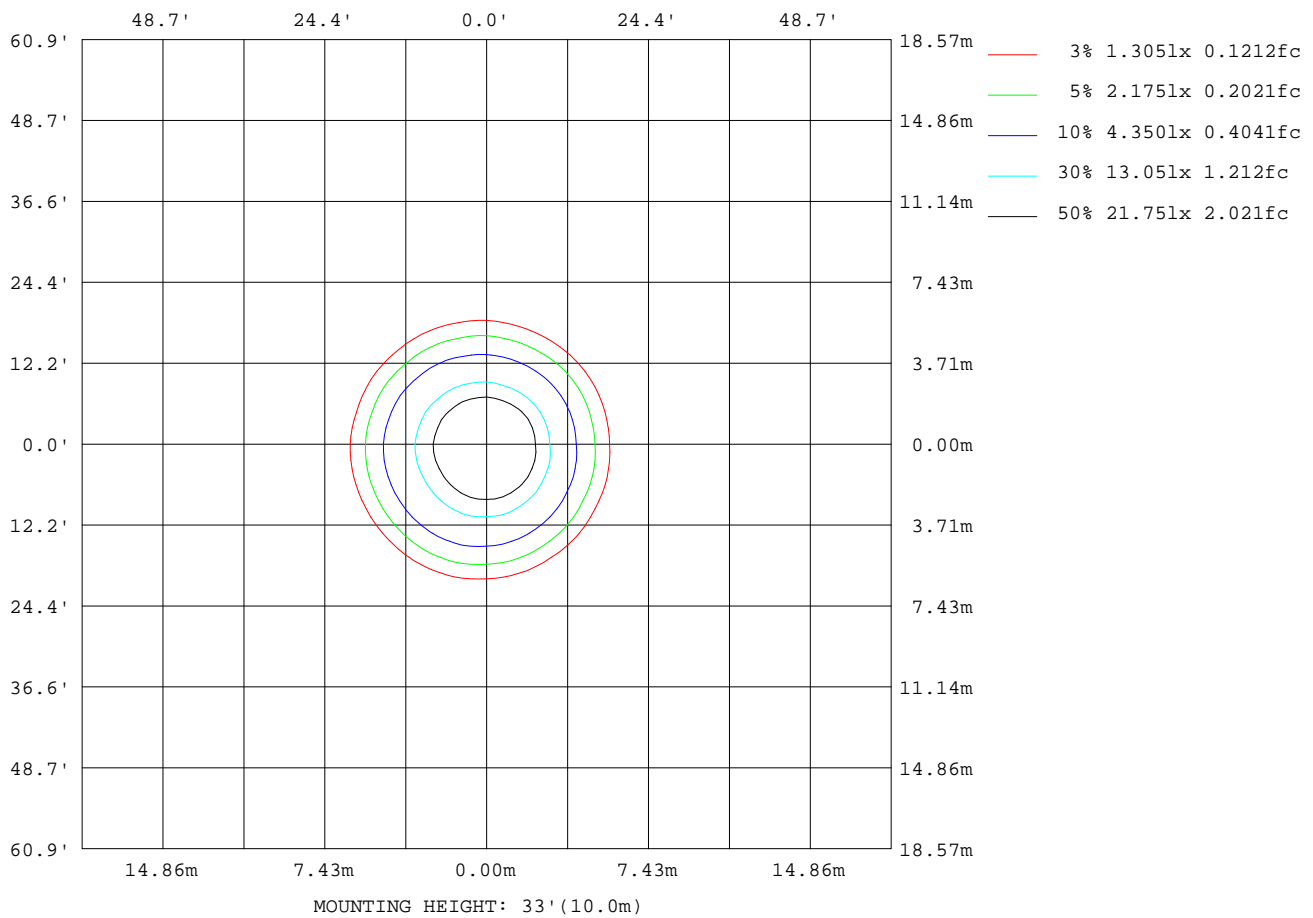
C Range: 0 - 360DEG
C Interval: 15.0DEG
Test Speed: HIGH
Temperature: 25.3DEG
Operators: Meng Yongjian
Test Date: 2018-01-19

γ Range: 0 - 90DEG
 γ Interval: 1.0DEG
Test System: EVERFINE GO-2000B_V1 SYSTEM V2.0.288
Humidity: 52%
Test Distance: 5.850m [K=1.0000]
Remarks:

GONIOPHOTOMETERS SYSTEM TEST REPORT

ISOLUX DIAGRAM

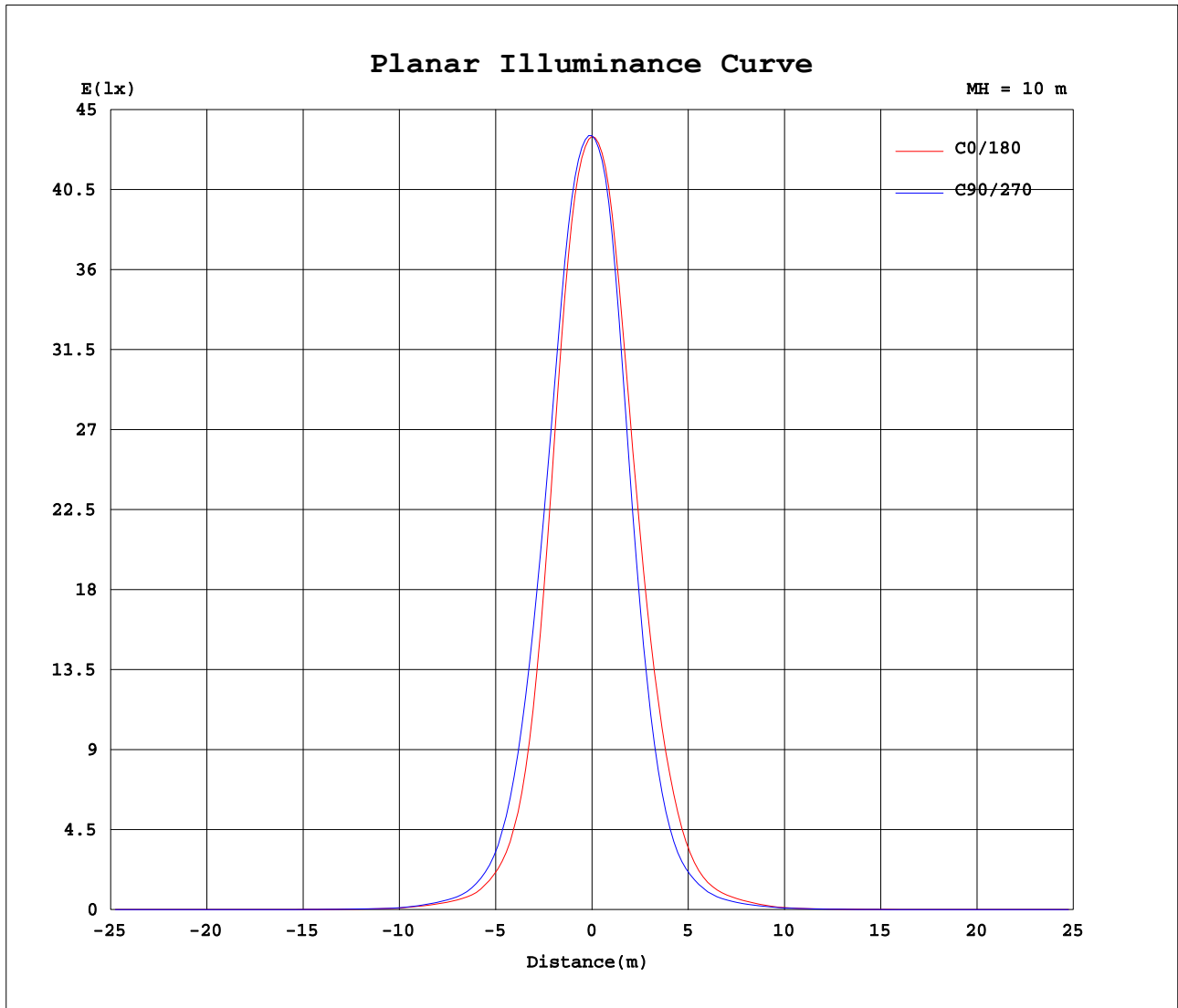
Test:U:34.20V I:0.2600A P:8.892W PF:1.000 Lamp Flux:1238.79x1 lm		
NAME: T100-9W-840-30	TYPE:Downlight	SERIAL No.:
SPEC.:4000K	DIM.: ϕ 110mm*H79mm	



C Range: 0 - 360DEG
C Interval: 15.0DEG
Test Speed: HIGH
Temperature:25.3DEG
Operators:Meng Yongjian
Test Date:2018-01-19

γ Range: 0 - 90DEG
 γ Interval: 1.0DEG
Test System:EVERFINE GO-2000B_V1 SYSTEM V2.0.288
Humidity:52%
Test Distance:5.850m [K=1.0000]
Remarks:

Planar Illuminance Curve



C Range: 0 - 360DEG
C Interval: 15.0DEG
Test Speed: HIGH
Temperature: 25.3DEG
Operators: Meng Yongjian
Test Date: 2018-01-19

γ Range: 0 - 90DEG
 γ Interval: 1.0DEG
Test System: EVERFINE GO-2000B_V1 SYSTEM V2.0.288
Humidity: 52%
Test Distance: 5.850m [K=1.0000]
Remarks:

UNIT: cd

```

γ Range: 0 - 90DEG
γ Interval: 1.0DEG
Test System:EVERFINE GO-2000B_V1 SYSTEM V2.0.288
Humidity:52%
Test Distance:5.850m [K=1.0000]
Remarks:

```

Test:U:34.20V I:0.2600A P:8.892W PF:1.000 Lamp Flux:1238.79x1 lm		
NAME: T100-9W-840-30	TYPE:Downlight	SERIAL No.:
SPEC.:4000K	DIM.: φ110mm*H79mm	

[illegible]

C Range: 0 - 360DEG	γ Range: 0 - 90DEG
C Interval: 15.0DEG	γ Interval: 1.0DEG
Test Speed: HIGH	Test System: EVERFINE GO-2000B_V1 SYSTEM V2.0.288
Temperature: 25.3DEG	Humidity: 52%
Operators: Meng Yongjian	Test Distance: 5.850m [K=1.0000]
Test Date: 2018-01-19	Remarks:

C Range: 0 - 360DEG	γ Range: 0 - 90DEG
C Interval: 15.0DEG	γ Interval: 1.0DEG
Test Speed: HIGH	Test System: EVERFINE GO-2000B_V1 SYSTEM V2.0.288
Temperature: 25.3DEG	Humidity: 52%
Operators: Meng Yongjian	Test Distance: 5.850m [K=1.0000]
Test Date: 2018-01-19	Remarks:

GONIOPHOTOMETERS SYSTEM TEST REPORT

Photometric Data Table [cd]

G/C	0.0	15.0	30.0	45.0	60.0	75.0	90.0	105.0	120.0	135.0
0.0	4350	4352	4353	4353	4354	4353	4353	4352	4353	4354
3.0	4246	4268	4271	4290	4296	4307	4303	4307	4296	4280
6.0	3930	3985	3990	4036	4048	4072	4063	4071	4036	3992
9.0	3323	3430	3451	3535	3548	3583	3557	3558	3491	3432
12.0	2520	2653	2701	2820	2851	2907	2886	2900	2856	2795
15.0	1731	1866	1939	2081	2137	2220	2220	2252	2211	2158
18.0	1103	1214	1279	1424	1491	1586	1609	1655	1629	1585
21.0	674.5	748.0	793.6	894.8	955.9	1047	1085	1144	1143	1116
24.0	423.1	459.6	484.8	540.9	592.9	651.7	689.1	744.7	755.9	747.6
27.0	278.1	299.3	311.9	342.7	365.6	402.6	425.4	462.4	474.5	470.9
30.0	178.9	193.8	201.8	223.3	237.5	258.5	271.0	291.5	297.8	295.4
33.0	121.4	129.3	130.3	143.0	149.4	163.5	172.6	186.1	191.7	191.1
36.0	90.75	94.22	95.92	100.9	106.0	113.3	119.3	129.2	132.9	135.5
39.0	66.81	69.24	70.17	73.50	76.58	81.37	85.24	91.17	95.09	95.42
42.0	46.87	48.78	48.92	50.95	52.11	53.39	55.61	56.22	60.12	58.93
45.0	27.61	28.78	29.04	31.29	31.87	30.98	32.20	30.70	32.49	31.78
48.0	18.98	19.63	19.71	20.58	20.83	21.06	20.55	20.56	20.47	20.16
51.0	12.79	13.35	13.43	14.07	14.19	14.34	13.74	13.79	13.69	13.62
54.0	7.964	8.399	8.483	8.998	8.928	8.931	8.401	8.376	8.290	8.438
57.0	4.648	4.943	5.040	5.413	5.280	5.219	4.912	4.629	4.518	4.761
60.0	3.084	3.250	3.325	3.611	3.754	3.781	3.490	3.296	3.047	2.892
63.0	2.229	2.346	2.408	2.617	2.721	2.722	2.494	2.337	2.172	2.071
66.0	1.624	1.689	1.738	1.881	1.951	1.933	1.760	1.645	1.541	1.477
69.0	1.162	1.197	1.228	1.315	1.353	1.319	1.202	1.114	1.060	1.024
72.0	0.8191	0.8190	0.8388	0.8822	0.9025	0.8647	0.7930	0.7337	0.7075	0.6879
75.0	0.5650	0.5439	0.5521	0.5679	0.5827	0.5438	0.5039	0.4564	0.4535	0.4368
78.0	0.3702	0.3363	0.3417	0.3340	0.3397	0.3034	0.2828	0.2532	0.2652	0.2532
81.0	0.2277	0.1921	0.1951	0.1702	0.1710	0.1374	0.1338	0.1156	0.1381	0.1309
84.0	0.1293	0.0938	0.1031	0.0676	0.0703	0.0415	0.0571	0.0393	0.0593	0.0545
87.0	0.0767	0.0437	0.0461	0.0394	0.0437	0.0394	0.0437	0.0372	0.0394	0.0372
90.0	0.0437	0.0415	0.0415	0.0394	0.0415	0.0394	0.0394	0.0372	0.0394	0.0372
G/C	150.0	165.0	180.0	195.0	210.0	225.0	240.0	255.0	270.0	285.0
0.0	4353	4352	4350	4352	4353	4354	4354	4353	4353	4352
3.0	4271	4270	4272	4258	4261	4243	4242	4227	4231	4222
6.0	3958	3961	3972	3919	3917	3873	3875	3838	3855	3837
9.0	3390	3398	3413	3337	3329	3243	3224	3156	3168	3131
12.0	2754	2760	2757	2660	2641	2530	2493	2395	2376	2310
15.0	2117	2123	2118	2018	1984	1860	1797	1689	1650	1586
18.0	1552	1556	1552	1471	1423	1297	1223	1118	1083	1025
21.0	1093	1095	1087	1015	957.1	854.0	786.9	706.4	678.1	642.5
24.0	731.2	730.6	722.0	657.1	614.5	536.5	494.2	442.0	422.1	396.0
27.0	461.9	460.3	452.2	408.8	384.1	341.3	317.5	290.6	279.6	264.1
30.0	289.4	289.1	284.5	261.6	248.7	224.8	211.4	194.9	187.4	174.7
33.0	190.0	190.5	188.4	174.4	164.9	150.0	142.6	128.9	123.1	117.2
36.0	135.4	137.2	135.6	125.4	117.8	107.5	100.9	93.35	89.50	86.11
39.0	96.28	96.87	96.56	89.38	84.04	76.51	72.11	67.02	64.48	62.30
42.0	58.20	59.34	60.39	55.33	53.30	49.01	47.63	44.88	44.22	43.13
45.0	30.93	31.65	32.73	31.10	31.52	30.12	29.89	28.46	27.77	26.74
48.0	20.10	20.55	21.26	20.97	21.42	20.99	20.96	20.00	19.41	18.54
51.0	13.67	14.05	14.58	14.34	14.72	14.46	14.42	13.59	13.12	12.35
54.0	8.521	8.807	9.242	9.061	9.413	9.230	9.147	8.482	8.028	7.519
57.0	4.759	4.971	5.272	5.200	5.530	5.516	5.449	5.027	4.780	4.379
60.0	2.841	2.964	3.143	3.237	3.525	3.681	3.857	3.665	3.440	3.142
63.0	2.052	2.145	2.278	2.362	2.561	2.703	2.826	2.690	2.502	2.281
66.0	1.482	1.560	1.660	1.725	1.859	1.963	2.051	1.946	1.800	1.637
69.0	1.051	1.114	1.197	1.239	1.323	1.394	1.437	1.364	1.251	1.143
72.0	0.7249	0.7666	0.8384	0.8669	0.9082	0.9568	0.9671	0.9261	0.8405	0.7751
75.0	0.4753	0.5111	0.5743	0.5889	0.6026	0.6350	0.6310	0.6065	0.5457	0.5102
78.0	0.2958	0.3145	0.3667	0.3831	0.3776	0.3964	0.3753	0.3592	0.3098	0.3044
81.0	0.1687	0.1746	0.2116	0.2299	0.2116	0.2234	0.1853	0.1797	0.1416	0.1512
84.0	0.0899	0.0785	0.1113	0.1206	0.1024	0.0988	0.0566	0.0659	0.0393	0.0593
87.0	0.0417	0.0372	0.0589	0.0591	0.0284	0.0350	0.0328	0.0350	0.0328	0.0350
90.0	0.0415	0.0394	0.0262	0.0306	0.0306	0.0328	0.0306	0.0350	0.0328	0.0328
G/C	300.0	315.0	330.0	345.0						
0.0	4353	4354	4353	4352						
3.0	4233	4249	4258	4254						
6.0	3876	3923	3951	3944						
9.0	3183	3264	3325	3325						
12.0	2351	2424	2492	2504						
15.0	1602	1640	1684	1701						
18.0	1022	1049	1075	1079						
21.0	634.5	641.8	657.5	662.0						

C Range: 0 - 360DEG
C Interval: 15.0DEG
Test Speed: HIGH
Temperature: 25.3DEG
Operators: Meng Yongjian
Test Date: 2018-01-19

γ Range: 0 - 90DEG
γ Interval: 1.0DEG
Test System: EVERFINE GO-2000B_V1 SYSTEM V2.0.288
Humidity: 52%
Test Distance: 5.850m [K=1.0000]
Remarks:

GONIOPHOTOMETERS SYSTEM TEST REPORT

Photometric Data Table [cd]

24.0	394.1	402.6	411.2	412.7
27.0	261.6	267.9	272.6	273.1
30.0	172.9	175.3	177.5	176.7
33.0	116.0	118.5	120.1	120.3
36.0	85.93	88.46	90.04	90.22
39.0	62.89	65.22	66.45	66.96
42.0	44.05	45.88	47.30	47.36
45.0	27.04	27.88	28.43	28.18
48.0	18.62	19.06	19.42	19.36
51.0	12.44	12.80	13.10	13.04
54.0	7.589	7.908	8.153	8.122
57.0	4.376	4.619	4.777	4.754
60.0	3.064	3.059	3.123	3.103
63.0	2.205	2.204	2.240	2.246
66.0	1.581	1.585	1.612	1.628
69.0	1.100	1.118	1.140	1.167
72.0	0.7423	0.7706	0.7773	0.8144
75.0	0.4847	0.5123	0.5153	0.5539
78.0	0.2837	0.3154	0.3143	0.3569
81.0	0.1395	0.1709	0.1723	0.2124
84.0	0.0436	0.0790	0.0784	0.1183
87.0	0.0328	0.0350	0.0328	0.0592
90.0	0.0328	0.0328	0.0328	0.0284

C Range: 0 - 360DEG
C Interval: 15.0DEG
Test Speed: HIGH
Temperature: 25.3DEG
Operators: Meng Yongjian
Test Date: 2018-01-19

γ Range: 0 - 90DEG
γ Interval: 1.0DEG
Test System: EVERFINE GO-2000B_V1 SYSTEM V2.0.288
Humidity: 52%
Test Distance: 5.850m [K=1.0000]
Remarks: